

A PART OF THE BAY WINDS PLANNED UNIT DEVELOPMENT

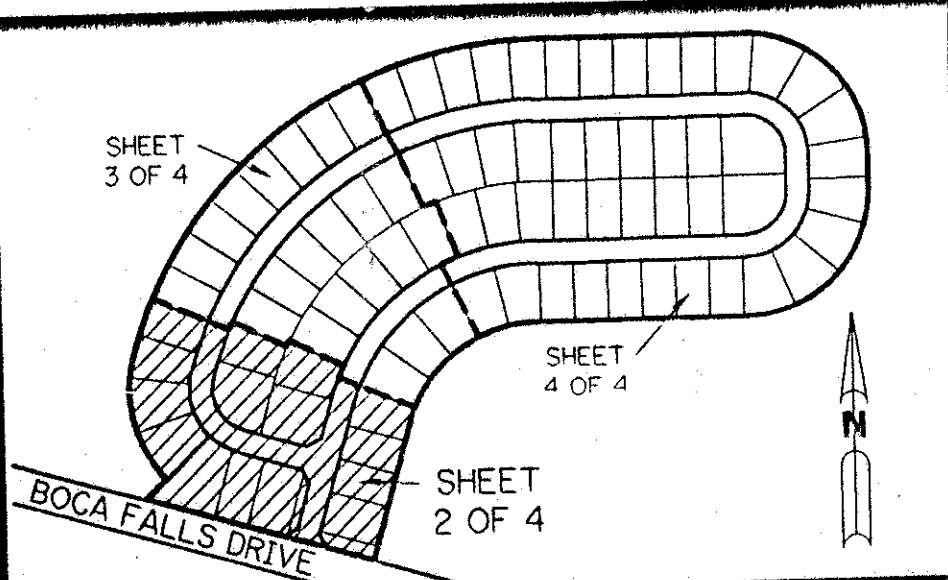
BOCA FALLS - PARCEL "L"

BEING A REPLAT OF ALL OF PARCEL "L" ACCORDING TO THE PLAT OF BOCA FALLS - PLAT ONE AS RECORDED IN PLAT BOOK 73, PAGES 124 THROUGH 131, INCLUSIVE, OF THE PUBLIC RECORDS OF PALM BEACH COUNTY, FLORIDA. LYING IN SECTION 22, TOWNSHIP 47 SOUTH, RANGE 41 EAST

SHEET 2 OF 4

AUGUST, 1994

116



KEY MAP

N.T.S.

LEGEND:

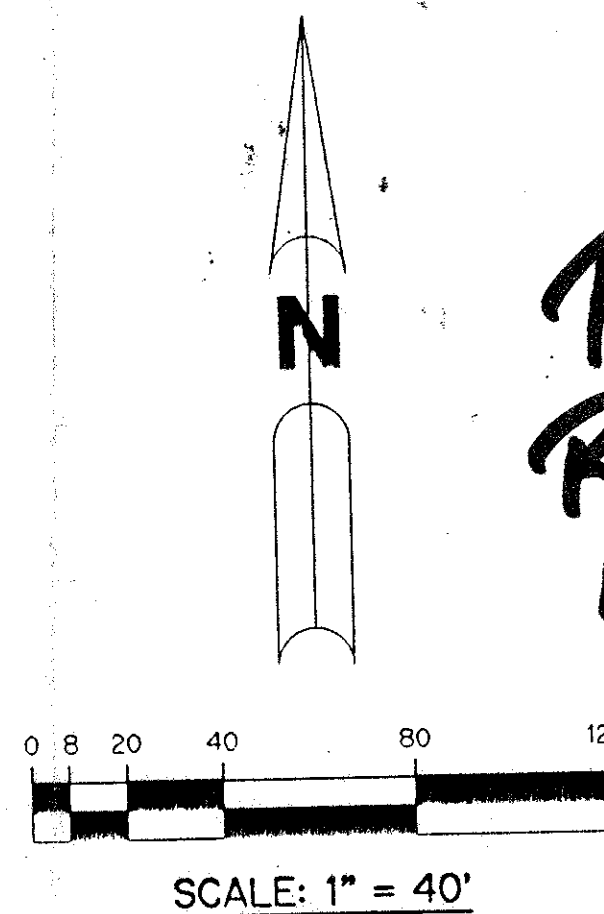
- - PERMANENT REFERENCE MONUMENT, P.L.S. #4213
- - PERMANENT CONTROL POINT, P.L.S. #4213
- Δ - DELTA ANGLE
- A - ARC LENGTH
- B.E. - BUFFER EASEMENT
- D.E. - DRAINAGE EASEMENT
- L.M.E. - LAKE MAINTENANCE EASEMENT
- N.R. - NOT RADIAL
- N.T.S. - NOT TO SCALE
- P.B. - PLAT BOOK
- P.G.S. - PAGES
- P.L.S. - PROFESSIONAL LAND SURVEYOR
- R - RADIUS
- R/W - RIGHT-OF-WAY
- U.E. - UTILITY EASEMENT
- N = 1000.000 - STATE PLANE COORDINATES
- E = 1000.000

LIMITS OF PLAT

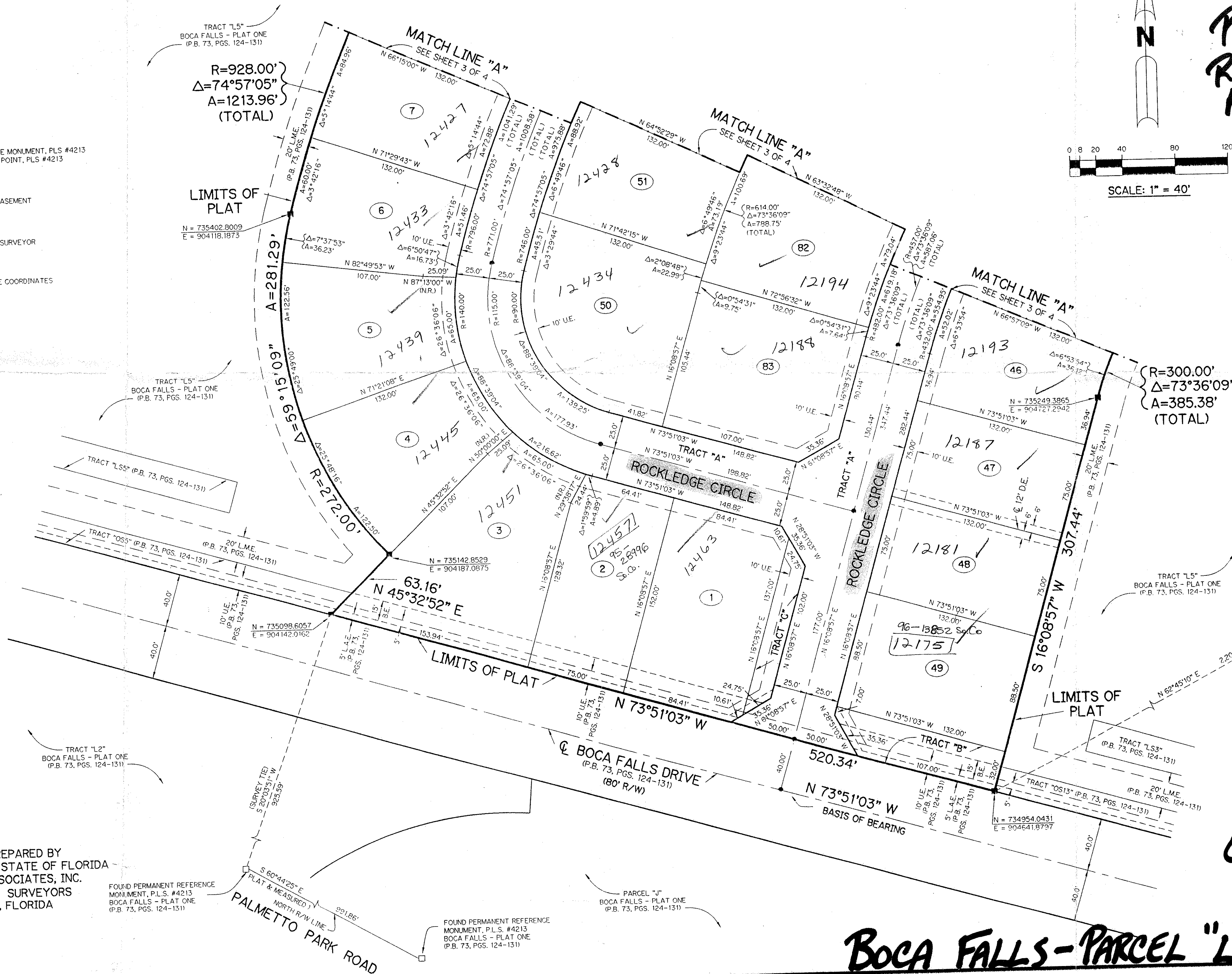
N = 735402.8009
E = 904118.1873

LIMITS OF PLAT

N = 735402.8009
E = 904118.1873



*Pct. 80-47B
Roads \$1199⁰⁰ PER UNIT
ALLOC. #0001
ESCROW AGENT FOR
TAKES + SCHOOLS
5/3/3/M*



$R=300.00'$
 $\Delta=73^{\circ}36'09''$
 $A=385.38'$
(TOTAL)

$R=928.00'$
 $\Delta=74^{\circ}57'05''$
 $A=1213.96'$
(TOTAL)

TAZ-778

SUBDIVISION * Boca Falls - Parcel L
BOOK 74 PAGE 116
FLOOD ZONE AO-1 FLOOD MAP # 1000
QUAD # 69 ZONING RT
SE 80-47 ZIP CODE 33428
SUB NAME Bay winds

THIS INSTRUMENT PREPARED BY
PERRY C. WHITE P.L.S. 4213 STATE OF FLORIDA
LAWSON, NOBLE AND ASSOCIATES, INC.
ENGINEERS PLANNERS SURVEYORS
WEST PALM BEACH, FLORIDA

FOUND PERMANENT REFERENCE
MONUMENT, P.L.S. #4213
BOCA FALLS - PLAT ONE
(P.B. 73, PGS. 124-131)

FOUND PERMANENT REFERENCE
MONUMENT, P.L.S. #4213
BOCA FALLS - PLAT ONE
(P.B. 73, PGS. 124-131)

FOUND PERMANENT REFERENCE
MONUMENT, P.L.S. #4213
BOCA FALLS - PLAT ONE
(P.B. 73, PGS. 124-131)

N = 738450.7720
E = 906566.2870
"BURMA"
FOUND P.B.C. BRASS DISK
IN CONC. MONUMENT

N = 735966.4580
E = 906606.2450
"YVONNE"
FOUND P.B.C. BRASS DISK
IN CONC. MONUMENT

*0201-017
7/116*

BOCA FALLS - PARCEL "L"